

A Publication of the Mid Minnesota Association of Woodturners

## The Mid Minnesota Association of Woodturners (MMAW)

is a member based not for profit organization, providing an environment of interest and activities dedicated to the enjoyment of woodturning activities and to promote woodturning to the local community through education and charitable events.

**MMAW** membership meetings are held the second Saturday of each month.



*WE ARE TEACHING THE WORLD TO TURN.*

### The next meeting is scheduled for July 9th.

Meetings are held in the **Tech Site** 248 33rd Avenue South Waite Park, MN 56387. Parking in the front and rear of the building (driveway is on south side). Entrances is in the front and back.

The topic for the July 9th meeting will be mounting wood blanks for turning on the lathe. Several members will demonstrate how they use different methods to do this including a vacuum chuck.

The **MMAW** is an affiliate of the [American Association of Woodturners.](#)

**MMAW membership meetings are held the second Saturday of each month.**

**Socializing** with fellow members starts at 9:30AM, coffee and treats available. The membership meeting starts at 10:00AM (most meetings are about 1.5-2 hours long including the social time) and includes announcements, members sharing their turned creations, a demo or presentation related to turning, and occasionally other activities such as a holiday celebration or wood exchange.

The PCA (Paramount Center for the Arts) is no longer requiring all folks in their buildings to show proof of vaccination or a negative COVID test within 48 hours of the event. They are encouraging everyone to wear a mask while in the buildings.

Hello Members!

I wish to thank Guy for chairing the June meeting. Many members are stepping up to help with the club. I would like to thank Bill, Brenda, Mark and Ellen for helping with the audio - visual at our meetings. We are still looking for someone to take over coffee. There is a fund for it so there is no out of pocket cost.

I had a very nice cruise in Alaska. We went from Anchorage to Vancouver and back. The weather was on the cool side but the scenery was fantastic. It seemed there were endless mountains with many waterfalls. We were able to get close to many of the glaciers all along the coast. Wildlife galore - eagles, whales and sea lions were spotted from the ship. I spent my time on shore checking out the local breweries and craft stores. There were quite a few with local turned bowls and other things. For you who carve there were mammoth tusks that were 10,000 years old and were intricately carved with many small animals and scenes.

According to reports the demonstration on sharpening at our June meeting was well received and many people were helped.

See you on July 9th. Turn safe,  
Fred.

Upcoming events that may  
be of interest

## Turn-On! Chicago Woodturning Symposium

We are happy to announce  
that registration is now open  
for our 7th Turn-On! Chicago  
symposium from

July 29-31, 2022

Learn more at

[www.turnonchicago.com](http://www.turnonchicago.com)

## Minnesota Woodworkers Guild Woodworkers Expo

**Saturday 24 September 2022  
9 AM - 3 PM**

**Bloomington Amory  
3300 W 98th St**



**Tool & Lumber Swap  
Vendor Displays  
Seminars  
Food & Fellowship**

**Free & Open to the Public**

WoodworkersExpo.org  
SPONSORED BY THE MINNESOTA WOODWORKERS GUILD (mnwwg.org)

## Minutes from the June 11th meeting

Meeting was opened at 10:00 by Guy Schafer during Fred Schmoll's absence. There were 23 people in attendance. Mike Lodermier, Brenda's husband, joined us for the meeting.

### Announcements

This meeting was noteworthy in that there was neither coffee nor treats as no one has volunteered to take Eddy Och's place in handling refreshments. Eddy explained that the job is quite simple and that there is no expense other than the volunteering of time. The coffee fund has a balance of \$95.00.

The August Downtown Art Crawl is still planned. The MMAW will have a space in front of the Paramount and will set up two lathes to give turning demos. Members are welcome to come and demonstrate turning, turn simple items so that more members can turn. For anyone wanting to sell items there will be a table set up for that too.

The large bandsaw that was donated to the MMAW and was at the Paramount is now at the Tech Site and can be used by MMAW members to prepare blanks from logs for turning.

The MMAW will have a picnic at the August meeting PROVIDED some member(s) take responsibility for organizing the event and getting food (at club expense). More info at the July meeting.

The Paramount will be offering several classes taught by club members this fall. Schedules will be posted soon at the Paramount Center for the Arts website.

The Empty Bowls event sponsored by The Place of Hope is scheduled for September at their Eastside location. As in the past we will donate bowls and give demonstrations on site. Donations of bowls will be accepted at the July, August and September meetings

Members should send photos of their work to Fred or Guy so they can be posted on our Facebook page.

Future issues of the Newsletter will again feature the , **Meet the Turner** section. Guy will recruit members to contribute a brief description of themselves and their turning experience and interests.

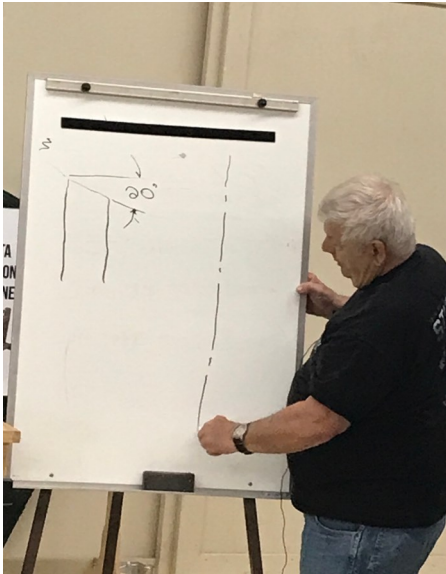
A countertop has been donated by Brenda Lodermier so that Byron John's donated Jet lathe can be mounted on the remaining cabinet.

Members were reminded that the AAW Symposium is coming up June 23-25.

Next months demo will be on the many ways that wood can be mounted on the lathe for turning.

The executive Board will discuss the question of whether it is worthwhile to continue to do Zoom meetings given the very small number of viewers. Meetings will/can continue to be recorded and made available for club members.

## This Weeks Demo was on Sharpening



Bill Baker spent time discussing sharpening a skew. He started by observing that in his experience a skew should be as big as you are comfortable with. The smaller the skew, the smaller the “sweet spot” where a catch can be avoided. He said that the ideal angle for the skew is 20\*, and that the real challenge is



to get the two sides of the edge to match. Once the edge is established, touch-up with a diamond card hone can quickly make it razor sharp, as he demonstrated by cutting his finger:). Starting with a rough shaped edge, Bill uses a magic marker to coat the surface he intends to grind. He uses his thumb to stabilize the skew against the patten set at 20°.

Gary Mrozek spent time talking about using information found on the Glenn Lucas site. Glenn has a two page printout that can be ordered from the site that gives his ideas on grind angles for different tools. Gary also shared his experience with the Johannes Mikelson Vector system which is somewhat similar to the Veri Grind jig that many of us use. He also discussed the 40/40 grind that Ashley Harwood teaches as it gives a very fine finish cut. Most turners use a type or variation of the Ellsworth grind that grinds the wings on the gouge back farther from the tip of the gouge.

After much question and answers and discussion the main point about sharpening was that jigs make it easier to sharpen your tools. The Oneway Wolverine Sharpening System allows you to find a grind and degree angle you like by using a jig like the Veri Grind or Johannes Mikelson Vector jig so that it can be repeatable time after time.

Thanks Bill and Gary for facilitating this discussion, nicely done!

The meeting adjourned after this with several members continuing the discussion and sharpening some of their own tools with the help of Bill Baker..



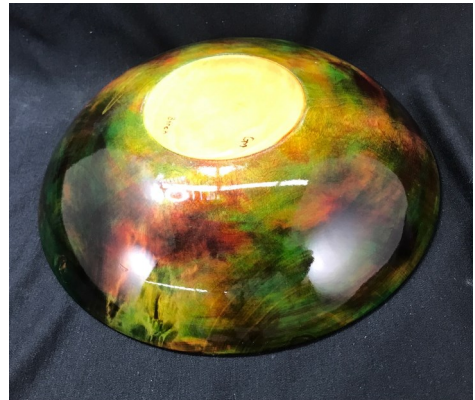


## Instant Gallery



Ellen Starr brought a sculpture for comment and suggestions. She was trying to decide which top design she would put on the sculpture she was making.

Gary Mrozek made a bowl with a blank dated 2009. He used aniline dyes applied with cotton balls to color the bowl. He finished the bowl with Rust-Oleum Triple Thick Glaze. He also related his experience turning wood that was infested with ants. He tried to get rid of them in the microwave, but it just irritated them and made them all the more active.



Guy Schafer described his experience turning a pen from a corian blank. He was skeptical but found it easy to work, easier than acrylic pen blanks he had used before.

He also brought an osage orange cup and a bowl from box elder which were once turned bowls and left at the Paramount and will be donated to the Empty Bowls event.



He also had an unidentified burl wood bowl. The burl bowl was FULL of worm holes and channels and as he turned the bowl he had to stop occasionally to let the dust settle down. A beautiful bowl but what a mess to turn.





## Instant Gallery



Guy Floreck turned these two natural edge bowls. One from black walnut and the other from Russian olive. Can you tell which is which?

## Meet the Turners

Greetings Jim Preusser here. First off there are 2 of us that live really close to God's country in the Avon Hills area. Barb, my better half enjoys her gardening, whether she is attending to her 600 different varieties of hostas or the award winning vegetable garden. She is an active member in the Master Gardeners program. In the winter months she shares a spot in my woodworking shop putting together beautiful stained glass windows

I have almost 7 years of retirement in after retiring from McGough Construction. I spent about 35 years in commercial and industrial construction building big projects such as hospitals, churches, schools , factories etc. I had spent 3 years alone on the Centracare Plaza putting on 7 additions and remodeling the inside. I also spent many years working at the St. Cloud Hospital as there is always construction going on there. I am a 3rd generation carpenter so woodworking has always been a part of my life.



As far as hobbies go I always start the new year helping at St. Johns with the maple syrup process. I am what they call the fireman at the sugar shack. I am the guy who feeds the wood fired evaporator about 25 cords of wood every spring. It is a fun process as you get to see the woods come alive in the spring. The monk that has been in charge of the operation for decades described it as almost being spiritual being able to watch the changing of the seasons. Other hobbies include fishing in Canada's Lake of the Woods, salmon fishing on lake Michigan or the many local lakes in the area, and best of all travel. Whether it is with our classic 1999 Airstream Bambi or any other form of transportation that gets us to see new and exciting places. One other hobby that I have been very active in for about 30 years is collecting antique woodworking tools I buy, sell and collect rare pieces, some that go back to the mid 1700s.

As far as woodturning, I had an early start on my Dad's Craftsman lathe when I was about 12 years old and I have been interested ever since. The turning I like to do is the kind that presents a challenge whether it is bowls, lidded vessels, or even spindles. I can lose the whole day in the workshop and the main thing is to have fun doing it !!

## Bill Langen

My childhood was in eastern Canada in the province of New Brunswick. During much of my early years my mother, my younger brother and I were living with my grandparents while my father was looking for work. My grandparents lived on their homestead in a densely forested area. As a child I spent most of my time roaming the woods. My playthings were mostly what I could make using a paring knife I snatched from the kitchen. As a little kid my dream was always to have a sharp jack knife and a forest nearby. To this day going into a woods is like going home.

We moved to the United States in 1952, My father, who during World War II had formal training as a mechanic in the Canadian Air Force, got a job on the Limestone Air Base in northern Maine. His training prepared him to repair the complex electrical systems of heavy equipment and to repair parts or even make new parts. We followed the construction of the interstate highway system and military bases. I finished elementary school, junior high-high school in various towns across New England and then university in Arizona and finally in 1969 joined the faculty of St. Cloud State College. I loved my work teaching but never lost my love of wood and little by little I collected a few tools and made simple things like shelves.

In the latter part of my career I developed an interest in making musical instruments and got a lathe to make tuning pegs. Thus began my experience with the lathe. What skill I have on the lathe is in large measure a result of Gary Mrozek's leadership in starting this club. For me the club has been a boundless source of learning, example and encouragement. In those early days one example sticks out for me. Entirely without prompting, John Caye approached me after a meeting and invited me out to his workshop where he gave me a tour and a lesson. That lesson took the edge off my hesitation and was the spur I needed to jump in and take chances. It's all been fun since then. Currently I have been experimenting inlaying polished stones in my pieces. My friend Mike Gamedes, with whom I've been turning for several years, has begun to venture into resin work, and I will probably follow his example. Woodturning has been a remarkable creative outlet for me, especially in the last 11 years following my retirement.





## Meet the Turners

My name is Guy Florek and I work for a Hardware distribution wholesale company.

I am married and have no children. Besides woodturning I like to hunt and fish.

I started woodturning in 2012. I like turning Live edge bowls. I use burl (Black ash, Red oak, Burr Oak and Maple) in my work.

Not sure if Guy was posing for a mug shot or just shy:) He is a good turner and does several shows/sales every summer.



We are very sorry to pass on the news of two of our members dying recently. Pam Lillehei and Lenny Merdan were two wonderful people and woodturners/woodworkers who will be missed.

Lenny was truly a one of a kind woodworker. His love of wood was expressed in his reluctance to toss out any piece of scrap. He had the unique ability to take a scrap of “yard waste” and turn it into something beautiful and original.

<https://www.wennerfuneralhome.com/obituaries/Leonard-Lenny-Merdan/>

Pam was likewise an accomplished woodworker producing lovely elegant pens.

They are both sad losses for us who have admired their work and for the Central Minnesota craft community. <https://www.brenny.com/obituary/Pamela-Lillehei>