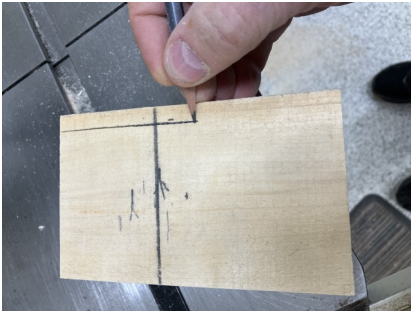


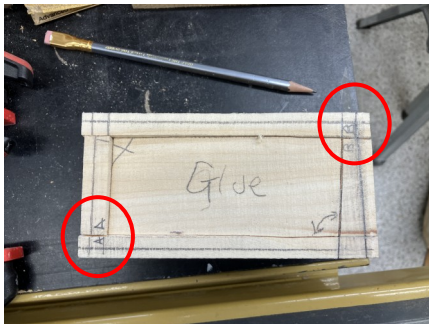
Draw “Witness Marks” on one end of your block to insure proper grain direction during the assembly/glue-up process.



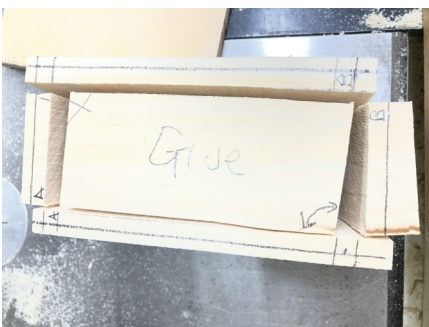
Draw a cut line along the side of the block at your desired thickness of the top/lid.



Cut the top off. Match up the witness marks from the previous step. Fold the top over and make an X on both halves that would line up if you put the two pieces back together. It can also be helpful to write “Glue” on both halves when we attach the underside of the lid and the upper side on the inner lid further in the process. On the bottom of the block write the word “Out”. This will help when you reassemble the box.



Draw a line near the outer edge of the block. This will determine the amount of overhang of the lid to the body of the box. Draw a second set of lines to show the inside walls of the box. Note that one end should have an angle to the cut on the inside wall. This will insure that the lid can only go on one way. Add witness marks (i.e., A, B or !. 2) to opposing corners to aid in reassemble.



Set the bandsaw table at approximately 3 degrees. Cut the two inside wall along the long side of the box first. Then cut the ends. You will be making these cuts on the downhill side of the blade. Save the inner plug. It should have the words “Glue” on the wide side and “Out” on the narrow side.



Draw a line approximately 1/8" on both top and bottom. Cut the top marked "Glue" on the uphill side of the blade.



Cut the bottom marked "Out" on the downhill side of the blade.

Note: with the bandsaw off, you can touch the surface of the plug to the blade to insure the cut will produce a uniform cut.



You can dry-fit the box together and draw a pencil line in the corners. This will allow you to sand and/or carve the inside walls of the box. DO NOT sand the surface where the glue will be applied. Then apply the glue, clamp, align bottom and top surfaces and wipe off and squeeze out. Insert the bottom panel (that you cut in the last step) through the top of the box with the word OUT first. Position the bottom panel flush with the bottom or with a slight recess. Adjust the side walls accordingly. Next insert the inner lid piece with the word "Glue" facing out. This will aid in keeping the box square while the



After approximately an hour, knock both the top and the bottom panels out through the top.



Set the box on top of the lid with the outside witness mark from the first step aligned.

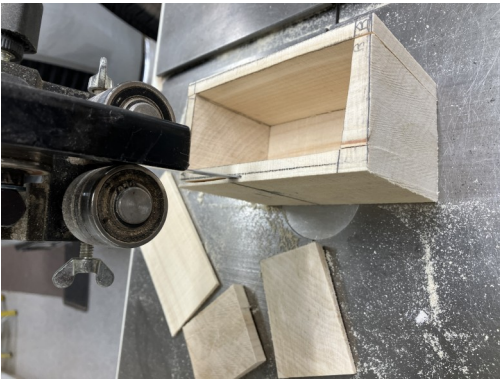
With the box centered on the lid, draw a pencil line on the under-lid surface marked "Glue" around the inner walls.



Glue the lid outer and inner panels together on the pencil line you just made in the last step. Clamp as need and set aside to dry.



Apply glue to the inside walls on the bottom of the box. Drop the bottom panel through the top of the box with the word "OUT" in first.



The final step in the making of the box is to cut along the outer wall line on the downhill side of the blade.

Some carving or sanding may be required to inner lid to insure an easy fit...not too tight and not too loose.

You can sand, carve and/or paint the box as you wish.

Be sure to check out Michael Cullen Bandsaw Box on YouTube

All Items below available from Amazon.com

The glue used
Titebond white



The Paint is
Tradional Milk paint



The Pencil was
Blackwing 602



Sharpener
Carl Angel 5



Blower
.WolfBox MF100

